



CENTRAL MAINE POWER

Projects

09-03-2024

SECTION 1

34.5 kV TRANSMISSION LINE REBUILD PROJECT

Planning Board Review Town of Vassalboro

Existing Conditions



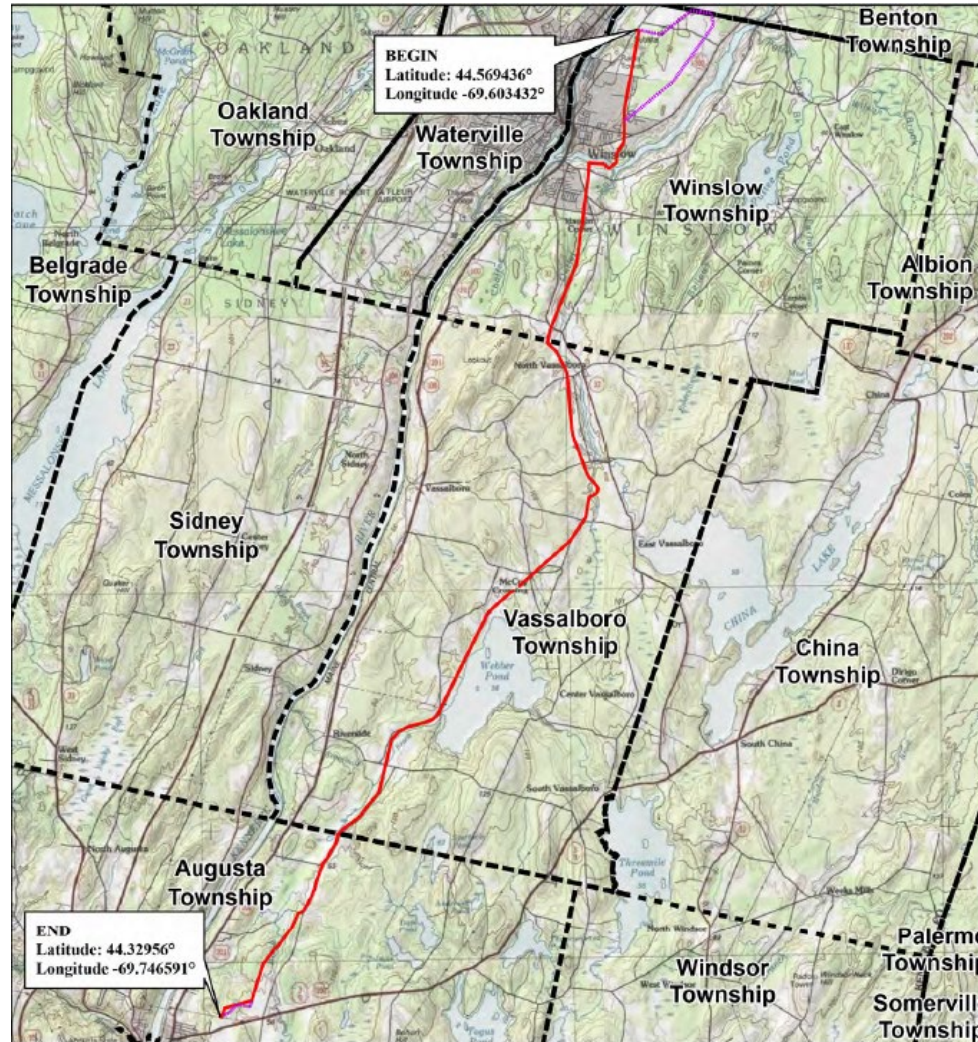
- Section 1 is an existing 34.5-kilovolt transmission line that stretches from Augusta East Substation to Winslow Substation (22.8 miles long).
- The existing line is a single pole structure configuration
- The existing line was built in 1920. The line is in poor condition due to sub-standard ratings on poles, age of the conductors, limited work area clearances, and insulators prone to failure. The line was identified as having significant structural and reliability concerns, requiring replacement with updated poles, cross arms and conductor.

Project Need

- The current line needs replacement to mitigate reliability, safety, and structural concerns.
- Replacement will improve reliability and reduce grid strain.
- A modern line with new structures will be built on an offset from existing centerline and utilize pole for pole replacement where only pole rights exist.



Existing Location

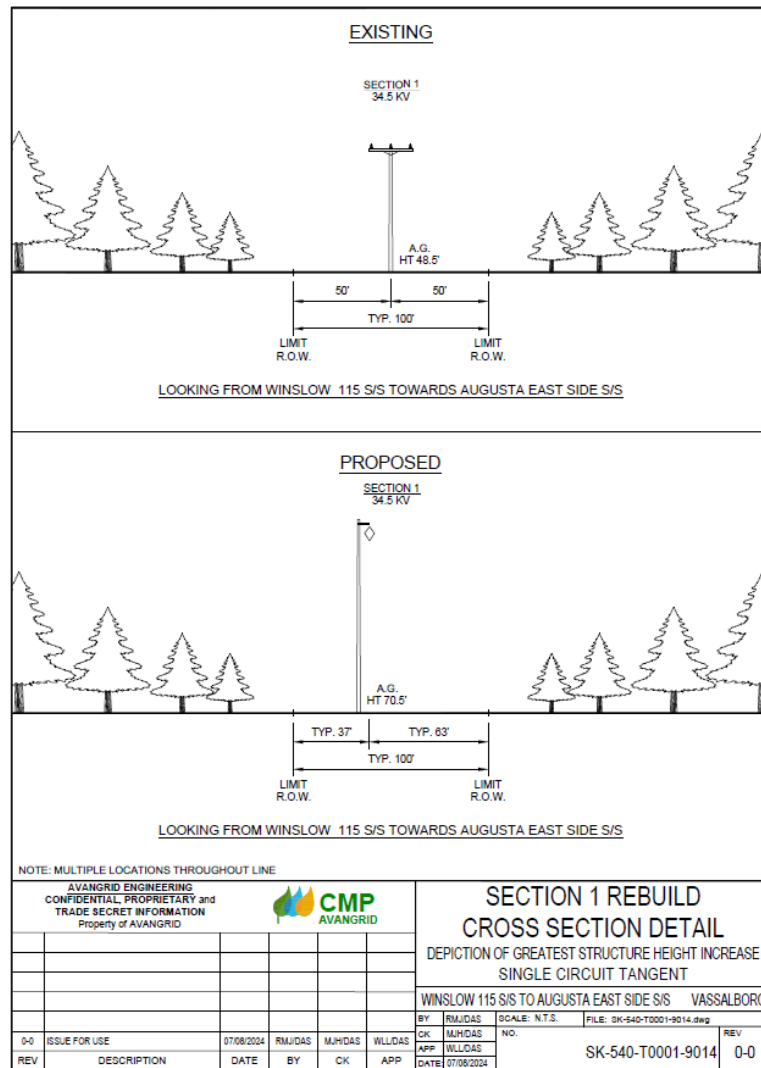


Project Scope

- The line will be built within the existing right(s)-of-way (ROW) with replacement poles installed approximately 5 to 15 feet from existing locations
- New, slightly taller steel monopoles will be installed at all locations except in roadside areas that will be replaced with wooden poles



Project Planning and Schedule



- Engineering is complete and procurement now underway.
- Wetlands, streams, and vernal pools were delineated and mapped within the existing ROW and proposed re-route in fall 2023 with vernal pool surveys in Spring 2024.
- A cultural resource Phase 1 survey is currently underway and expected to be complete by end of September 2024.
- Construction mobilization is anticipated in Q1 2025. Matting installation and tree removal anticipated to start November 2024
- Project completion (including final restoration) anticipated to take 12-18 months, approximately.

Resource Impact Avoidance and Minimization

- The project was designed (including access) to avoid and minimize natural resource impacts to the extent practicable.
- Natural Resources were mapped and assessed, and this information was provided to Engineering to prepare a final design to avoid and minimize impacts to wetlands, shoreland areas, and floodplains.
- No in-stream work will be performed on this project.
- 23 poles located in Resource Protection District
- 92 Poles in Limited Residential District
- 2.4 square feet of permanent impact (fill) for each new pole installation
- Authorization from Maine DEP has been received under the Natural Resources Protection Act
- Authorization from the U.S. Army Corps of Engineers is anticipated in October or November 2024.